



NASDAQ: SKYQ

ENVIRONMENTALLY
SOUND TECHNOLOGY
SOLUTIONS



**Investor Presentation
May 2025**

Disclaimer

This presentation may include "forward-looking statements." All statements pertaining to our future financial and/or operating results, future events, or future developments may constitute forward-looking statements. The statements may be identified by words such as "expect," "look forward to," "anticipate," "intend," "plan," "believe," "seek," "estimate," "will," "project," or words of similar meaning. Such statements are based on the current expectations and certain assumptions of our management, of which many are beyond our control. These are subject to a number of risks, uncertainties, and factors, including but not limited to those described in our disclosures. Should one or more of these risks or uncertainties materialize or should underlying expectations not occur or assumptions prove incorrect, actual results, performance, or our achievements may (negatively or positively) vary materially from those described explicitly or implicitly in the relevant forward-looking statement. We neither intend, nor assume any obligation, to update or revise these forward-looking statements in light of developments which differ from those anticipated. You are urged to carefully review and consider any cautionary statements and the Company's other disclosures, including the statements made under the heading "Risk Factors" and elsewhere in the Company's Form 10-K as filed with the SEC on March 31, 2025. Forward-looking statements speak only as of the date of the document in which they are contained.



Corporate Overview

Sky Quarry is an integrated energy solutions company committed to revolutionizing the waste asphalt shingle recycling industry.



NASDAQ:
SKYQ
Bookmark this link



Significant Market Opportunity

- *Millions of tons of asphalt shingle waste is generated annually, which, If recycled, would equate to the recovery of **20–22 million barrels** of oil and between **9–11 million** tons of valuable materials, a market valued up to **\$4.4 billion**.



Fully Integrated Solution

- Leveraging ECOSolv™, an oil extraction technology, we can transform these waste shingles into multiple products and revenue streams, turning an environmental challenge into a profitable and sustainable prospect.

*These estimates are based on management’s assessment

Share Price¹	\$.85
Market Cap¹	\$14.9M
Revenue (Q4 2024)	\$4.2M
Revenue (FYE 2024)	\$23.4M
Net Loss (FYE 2024)	(\$14.7M)
Shares Outstanding²	19.99M
Float²	12.6M
Headquarters	Woods Cross, UT

1.As of May 1, 2025
2.As of March 31, 2025



NASDAQ:SKYQ

Investment Highlights

We Have Revenue

- We own two substantial processing facilities
- Our refinery is generating revenue w/increased revenues expected in 2025

Fortified Growth

- Market opportunities across multiple industries & sectors
- Ability to capitalize on regional fuel supply shifts and growing regulatory mandates

Competitive Advantage

- Integrated capabilities from extraction to refining
- Competitors not at this stage of execution in their operations

Scalable Revenue Model

- Adaptable infrastructure
- Multiple potential revenue streams, including regional sales.
- Fortified feedstock

The Problem

Currently, there are no sustainably viable solutions for the disposal of waste asphalt shingles.



15M

Tons are dumped into landfills annually



700M

Tons of asphalt shingles have been dumped into landfills since 1960



80%

Of North American homes have asphalt shingle roofing



300yrs

For asphalt shingles to decompose



NASDAQ:SKYQ



*Source: EPA, "[Advancing Sustainable Materials Management](#)," December 2020, pg 23

How Does Shingle Extraction Technology Work?

The innovation lies in our ECOSolv™ technology which has a material recovery rate up to 95%, recycles up to 99% of its solvent, and recovers up to 99% of hydrocarbons.



NASDAQ:SKYQ

KEY ADVANTAGES

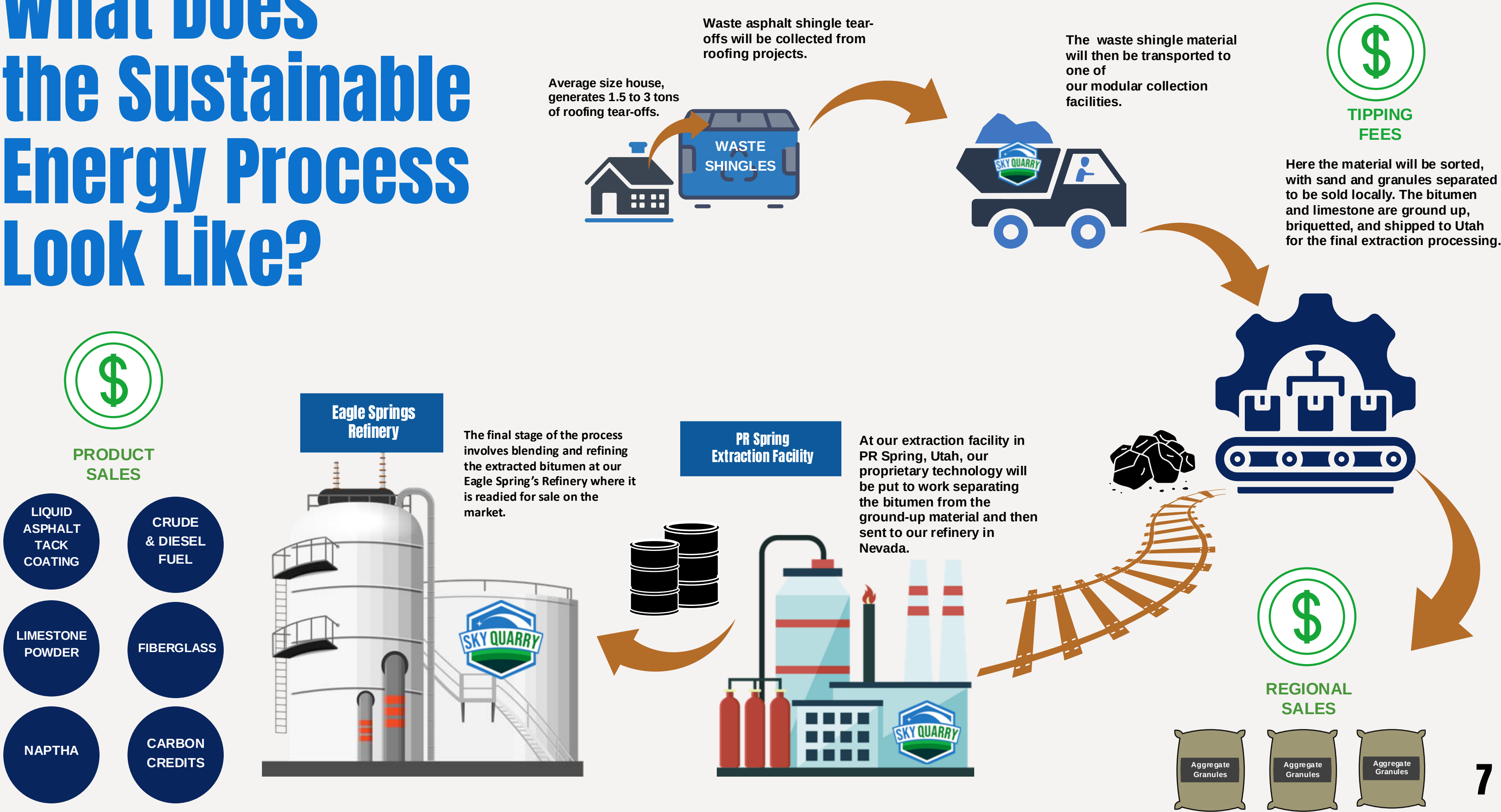
ENERGY
EFFICIENT

CLOSED
LOOP SYSTEM

CLEANER METHOD

ECO-FRIENDLY

What Does the Sustainable Energy Process Look Like?



Our Facilities

From Extraction to Refining



NASDAQ:SKYQ

MODULAR ASR FACILITIES

Expected to provide up to 100K tons of shingle feedstock while producing sellable byproducts. The units are engineered for scalability and cost efficiency.



UPSTREAM

PR SPRING EXTRACTION FACILITY

With a designed capacity of 2,000 barrels per day, PR Spring will extract oil from both asphalt shingles and hydrocarbon resources.



MIDSTREAM

FORELAND REFINERY

The refinery will complement PR Spring by refining the sustainably produced oil from the extraction process. Historically, it has processed 485,000 barrels of oil annually.

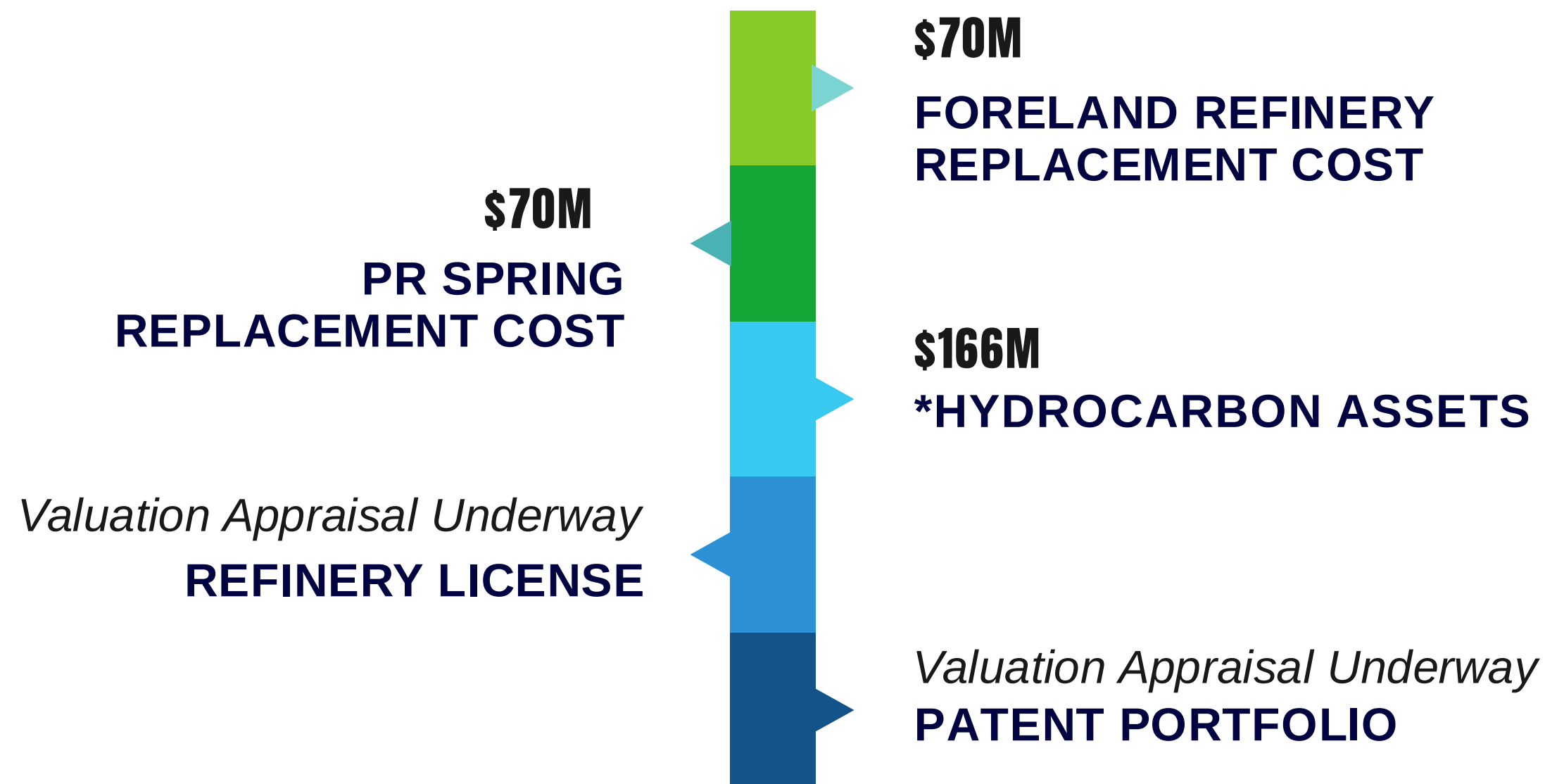


DOWNSTREAM



NASDAQ:SKYQ

Asset Portfolio



Our Sustainable Business Model



TIPPING FEES

We will get paid to receive waste asphalt shingles, which is called a "tipping fee."

\$45-\$150/TON

Range of tipping fees, which is anticipated to cover most, if not all, of the costs to process & break down the shingles.

\$94/TON

The average tipping fee in Southern California is \$94/ton

PROFIT LINE

Nearly all revenue generated from products recovered from waste asphalt shingles contributes directly to the profit line.



NASDAQ:SKYQ

Potential Revenue Streams

7

NASDAQ:SKYQ



TIPPING FEES



SAND



GRANULES



LIMESTONE
POWDER



FIBERGLASS



SUSTAINABLY
PRODUCED OIL & FUEL



CARBON
CREDITS

Roofing
Contractors

Construction &
Paving Industries

Shingle & Carpet
Manufacturers

Carbon
Sequestration

Petrochemical
Products

Carbon Fiber
Manufacturers

Aviation & Heavy
Transportation

Global
Carbon Market

Market Landscape



NASDAQ:SKYQ



Regulatory Environment

- Regions across the U.S. are mandating the diversion of construction and demolition waste from landfills.
- Austin: 50%
- Seattle (King County): 80%
- California: up to 75% in some areas



Regional Market Shifts

- Phillips 66 has announced plans to shut-in its Los Angeles-area refinery in late 2025.
- California's recent enactment of ABX2-1 poses a threat to Western regional fuel supplies.

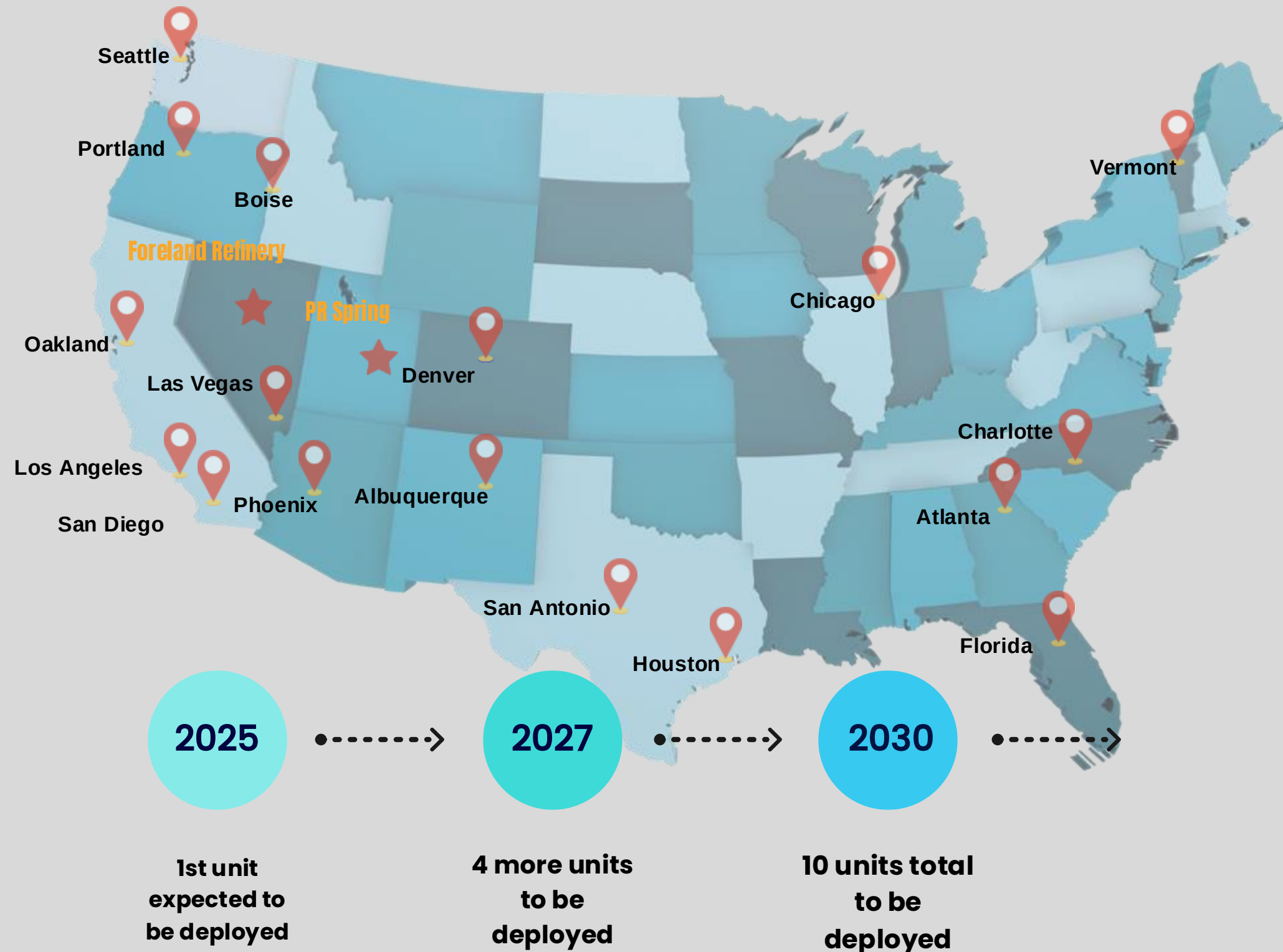


Sustainable Product Market

- Sustainable fuel market is expected to triple over the next 20 years.
- Union Pacific is actively pursuing efforts to decarbonize operations through increased use of low-carbon fuels.

Expansion Strategy

As part of our national expansion strategy, we plan to deploy a network of modular facilities across key markets.



Fast to deploy, built to scale—
designed for rapid expansion into high opportunity regions

Lower logistics costs—
facilities will be placed close to the waste source and end markets

Revenue Generating— *units will produce income from tipping fees and byproducts*

Replicable Model— minimal capex and designed to repeat across regions

Financial Results Summary



NASDAQ:SKYQ

***Numbers provided are audited**

	Year Ended December 31,		
(\$ millions)	2024		2023
Revenue	\$23.4		\$50.7
Gross Profit (Loss)	(1.4)		2.3
Operating Expenses	6.1		3.7
Operating Income (Loss)	(7.5)		(1.4)
Net Income (Loss)	(14.7)		(4.4)

(\$ millions)	December 31, 2024	December 31, 2023
Assets		
Cash and Cash Equivalents	\$0.385	\$0.327
Total Current Assets	5.0	6.4
Total Assets	26.9	28.2
Liabilities		
Total Current Liabilities	12.4	12.9
Total Liabilities	15.4	15.1
Equity		
Total Stockholder's Equity	11.5	13.1
Total Liabilities and Equity	26.9	28.2

Sky Quarry completed a follow-up crowdfunding offering for \$6.7M on October 9, 2024.

Our Leadership



NASDAQ:SKYQ



David Sealock
Founder,
Chairman, CEO

Mr. Sealock

is a highly accomplished, results driven senior executive leader with over 30 years of strategic management and business leadership. He has a track record of building high-performing teams with a strong focus on setting corporate strategy, executing over \$2.5Bn in equity and debt transactions, joint ventures and M&A deals.

David has an BSc. in business management as well as electrical technologist engineering and is a Registered Engineer with ASET.



Marcus Laun
Founder,
Director,
EVP

Mr. Laun

has spent the past twenty years as a founding principal or senior advisor to over fifteen publicly and privately held companies. He has advised and raised capital for companies in the solar, wind, oil, gas, and alternative fuel industries.

As Managing Director of Knight Capital Group (the largest market-maker of equities in the US), he oversaw syndicates for over \$300 million in financing.

Marcus has a BS in Hotel Management from Cornell University, and an MBA from Columbia University.



Darryl Delwo
CFO

Mr. Delwo

has over 25 years experience building and leading finance teams in global companies with significant operating scale and complexity. He has held senior positions in high growth public and private firms, providing strategic oversight to finance and operations, including \$150mm of M&A activity, and joint venture and refinancing transactions.

Darryl has a BC in Accounting & Business Management from University of Calgary, holds CMA and CPA designations from CMA and CPA Alberta.

Thank You!

Contact Us

Corporate Contact

Jennifer Standley
Director Of Investor Relations
Email: ir@skyquarry.com

www.skyquarry.com



NASDAQ:SKYQ

